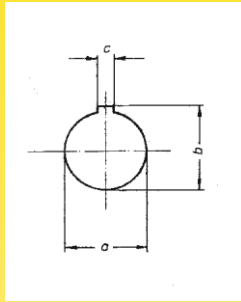
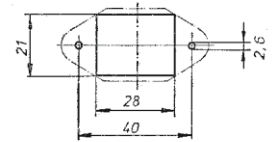


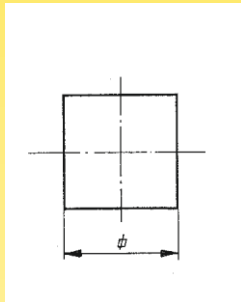
Vorhandene Stanzwerkzeuge für Ausbrüche in Front- und Rückplatten



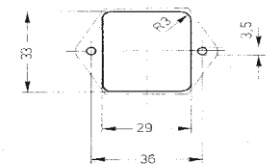
ML	a	b	c
23	17,9	18,8	2,8
24	14	15,5	3
25	10	12	3
31	18,5	19	2,8
31-1	36	37,7 ^{+0,2}	3
31-2	16	17,1 ^{+0,1}	2,5



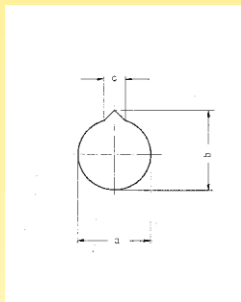
Maßloch 7



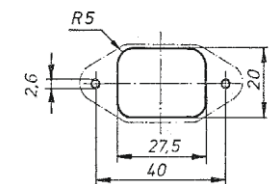
ML	150	151	152	153	?	154
	8	10	12	13	14	16
ML	155	156	157	158	159	160
	18	20	22	30	25	6



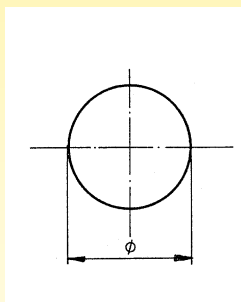
Maßloch 171



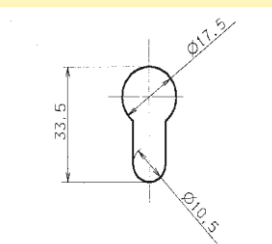
ML	a	b	c
180	7 ^{+0,2}	8 ^{+0,2}	2,2



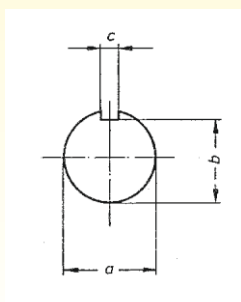
Maßloch 6



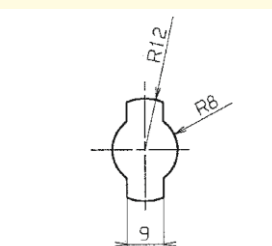
ML	100	101	102	103	104	105	106	107	108
	66	8	9	10	11	12	12,5	13	14
ML	109	110	111	112	113	114	115	116	117
	15	16	17	18	19	20	21	22	24
ML	118	119	120	121	122	123	124	125	126
	25	27	28	30	31	32	35	40	45
ML	127	128	129	130	131	132	133	134	135
	50	60	55	56	26	65	70	53,5	5
ML	136	137	138	139	140	141	142		
	7	23	26	34	8,5	4	3		



Maßloch 191



ML	a	b	c
26	122	11	1,5
27	6,3	5,5	1
28	6	5,3	1



Maßloch 190